

Smart Pet Monitoring and Feeder (SPMF) using IOT for Day -to-Day usage

PROJECT REPORT

Submitted in the partial fulfilment of the requirements

for award of the

Six Months Online Certificate Course

in

Cyber Security

Course Duration: [22-01-2024 to 21-07-2024]

By

T.VIJAYA BABU

(HT. No.2406CYS111)

Under the Esteemed Guidance
Dr.UMA.N.DULHARE



**DIRECTORATE OF INNOVATIVE LEARNING & TEACHING
(DILT)**

JAWAHARLAL NEHRU TECHNOLOGICAL UNIVERSITY HYDERABAD

(Formerly SCDE_SCHOOL OF CONTINUING AND DISTANCE EDUCATION)

Kukatpally, Hyderabad, Telangana State, INDIA- 500 085

JULY 2024

ABSTRACT

The Internet of Things (*IoT*) expands the capabilities of the internet to include everyday household items like light bulbs, locks, smart microwaves, and other technologies in addition to smart phones and computers. Consumers that appreciate having all of their electronics connected for the sake of greater convenience, comfort, energy efficiency, and most significantly, personalization, which is one of the project's focus areas, are growing more and more interested in smart home gadgets and devices. This helps in solving the starvation of small pets such as dogs and cats in absence of their owners. Through this proposed design, the user can adjust the feed time, the time between consecutive feeds, and the amount of feed served. The user can modify the feed time, the gap between successive feeds, and the quantity of feed served using this proposed design. This project develops the automation of pet feeders using the Internet of Things (IoT). Volumetric flow rate also calculated. Over 55% of dogs and cats are overweight, which poses serious health risks like heart and lung issues, kidney illness, and diabetes. This problem will be resolved by the proposed device, which helps with weight management by giving pets the portioned meals they need. The project's main elements include an Arduino Uno for the smart automatic pet feeder, an RTC module for timing and managing feeding schedules, a distance sensor for checking food levels, and a servo motor SG90 with a wide-angle servo (0°- 180°) for controlling the flow of the food dispersed.

Keywords : IOT, Pet feeder, Data, Arduino Uno

TABLE OF CONTENTS

Chapter No	Chapter Name	Page Number
1.	Introduction	4
2.	Literature Survey	5
3.	Problem Statement	6
4.	Objectives	9
5.	Methodology	10
6.	Algorithms	13
7.	Results & Analysis	14
8.	Conclusion	17
9.	Future Scope	17

1. Introduction

One of the best things is having a pet at home. But one of the biggest issues with maintaining a pet is consistent feeding. Each pet's diet and feeding habits need to be carefully examined in order to raise a healthy pet. Pets' health is directly impacted when food is not given to them on schedule. As a result, the proposed machine will provide a solution to the problems like malnutrition and obesity. The major benefit of this clever automatic pet feeder is the ease as you simply need to refill it every few days. This saves you time and energy because they operate on timers that can dispense food to pets numerous times each day to meet their nutritional needs. As a result of electronic automation and IOT, the machine's IOT-based design allows for a much more individualized user experience. In order to decrease the risk of disease, it can be used to monitor the amount of food supplied to the pet at each meal. The ideal pet owner is one who is constantly on the road and has inconsistent schedules since an automatic pet feeder can feed the pet according to the personalized schedule and helps make it easier to keep a regular feeding plan. Parallely, is also useful for elderly dog owners who have difficulty bending over to fill their pet's feeding bowls on a daily basis. These devices assist the dog in reducing the physical and emotional stress that traditional approaches may worsen. The proposed design is easy to clean and maintain compared to other machines with more complex designs, where cleaning can be challenging and the unit may need to be disassembled to properly clean moving parts. The pet care market and industry are growing yearly, hence new technologically based solutions are required.

2. Literature Survey

One of the main issues with IOT automated systems is the integration of heterogeneous data from various sensors and their ability to execute joint jobs. Interoperability appears to be the primary objective in these systems by providing [1] a common method of accessing and concealing the heterogeneity of various home devices. Every pet owner has a unique lifestyle; [12][2] using this machine will be different from the traditional method of owners feeding their dogs by hand since it will provide more accurate feeding at the times we specify, as well as the ability to manage it from a distance. something the traditional method cannot provide. In [3] the smart pet door is made with a detecting tag on the collar that enables the pet owner to keep an eye on their pet's movements. To remotely operate the car, an automated system is created employing an Internet protocol (IP) camera and a microcontroller. [8] A MQTT (MQ Telemetry Transport) server, the microcomputer receives MQTT messages from mobile devices. Through its specified pin layout, the microprocessor transmits the GPIO (General Purpose Input /Output) signals to the motor hardware. The microcomputer will simultaneously receive video streaming from the IP (Internet protocol) camera. The screen of the mobile phone can receive this streaming. This design makes use of a brand-new embedded development board and a brand-new Wi-Fi development board. The CC3200 uses the compilation function of the Yocto Project Linux kernel. [7], which can undertake routine and quantitative feeding routines, as well as automate pet feeding and watering. The feeder has a more precise control over the food and water delivery thanks to Internet of Things (IoT) technology. Real-time monitoring of the pet's behavior can be done with a remote camera, and the feeding situation can be observed with a phone [14]. This pet feeder design [10] [13] has elements that make pet care more convenient for both the owner and the pet. In order to help solve the overfeeding issue, this system also provides information about the pet's feeding, including whether it is eating or not and how much is being consumed. This approach also aids in reducing feed waste because it supplies the leftover feed last. A interactive remote control is provided [9], this design also eliminates the

traditional manual adjustment of pet feeders. Additionally, this design does away with the standard manual adjustment of pet feeders. The priority feeding of pets could be adjusted to use a camera rather than sensors as an example of an innovation. On demand, this device may also send a brief video clip [5] [6] of the pet eating to the owner via multimedia message. IoT can be used to diagnose health problems such as body feeding, remote monitoring, and temperature analyses [4]. used sensors built into Radio Frequency Identification (RFID) tags that can be tracked using GPS to address the issue of animal identification at great distances. a smart phone app, a Raspberry Pi camera, and an automatic [11] pooping pad. Three tiers of the automatic feeder receive equal distributions of food. The serving size is decided by a weight sensor, and Arduino controls the feeding mechanism. The Raspberry Pi webcam is used to keep an eye on both the automatic feeder and the poop pad. Both a client and a server are performed by the Raspberry Pi.

3. Proposed Work/ Problem Statement

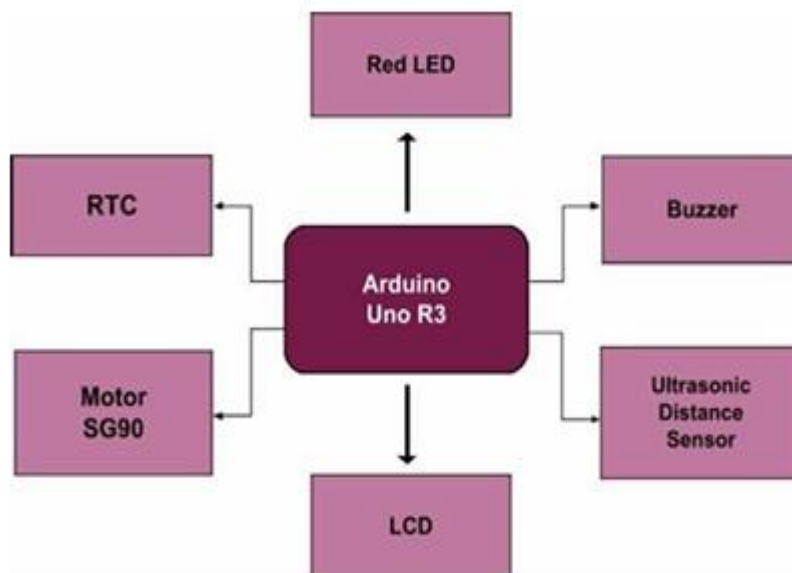


Fig .1 : Block representation of IoT Pet feeder

Arduino Uno R3:

It is employed to regulate the Pet Feeder's operations for a variety of purposes. The proposed IoT pet feeder's block diagram is shown in Figure 1. For starting user-friendly communications and producing single-board microcontrollers for controlling digital devices, Arduino's open-source hardware and software are employed. The most recent model of the Arduino Uno is the Uno R3. The reference versions of Arduino are the Arduino board and Integrated development environment (IDE) software, both of which are upgradable. The Uno-board, the first in a line of USB- Arduino boards, is the default design for the Arduino platform. In the creation of Arduino boards, a variety of microprocessors and microcontrollers can be utilized. The boards with digital and analogue I/O pins that can be connected to breadboards or shields (for prototyping) and other circuits are taken into consideration. The boards can also be programmed using serial communications connections, including USB on some variants. The computer languages C and C++ as well as the common Application programming interface (API) known as "Arduino language" can be used to create programmes for microcontrollers. Along with conventional compiler tool chains, the Arduino project also offers an IDE and a command-line interface (Arduino-cli) built in Go. Red LED: An average 5mm has a 2V forward voltage drop and a forward current of 20mA. When a LED is connected to the Arduino, a current-limiting resistor must be used.

Piezo Buzzer:

This device replaces the electromagnet found in most speakers. To produce sound waves, one uses the piezoelectric effect. Applying a square wave could be used to create sound at the desired frequency.

Real-Time Clock (RTC):

An RTC is a time-measuring electrical device (often in the form of an integrated circuit). The Real Time Clock module's internal battery makes sure that even when the systems are turned off, the computer keeps the right date and time. Once this module is installed, use the Time Preferences or Set Clock command to enter the proper date into the computer and save it. The workbench clock will then always show the right time.

Servo Motor SG90:

It is a servo motor with a low price and great output power. It can rotate up to 180 degrees, with a maximum of 90 degrees ever step. To regulate its movement, it simply needs a single output pulse signal. In contrast to a DC motor, a servo motor is employed for precise position control. The white/yellow wire is the control signal, the black/brown wire is ground, and the red. orange wire is 5V. But other colouring schemes exist. The 5V wire must be linked to a separately regulated 5V source rather than the Arduino's 5V supply due to the high power consumption of servos. Ultrasonic Distance Sensor: Transducers and ultrasonic sensors are devices that produce or detect ultrasound radiation. These devices fall into one of three major categories: transmitters, receivers, or transceivers. While transmitters convert electrical impulses into ultrasound, transceivers may both transmit and receive ultrasound.

Arduino Ultrasonic distance sensor is used to determine the distance of the object utilising Sound Navigation and Ranging (SONAR). 40KHz or 40000 Hz is the frequency at which ultrasound is produced. LCD: Here, polarizers and liquid crystals with light- modulating properties are employed. Liquid crystals don't emit light directly; instead, they produce colour or monochromatic images using a backlight or reflector. A two-line display with 16 characters per line is represented by the number 162. On this LCD, each character is displayed in a 5x7 pixel matrix..

4. Objectives /Software Design

1) Flow Chart: Figure 2 uses a flowchart to illustrate the algorithm's diagrammatic representation.

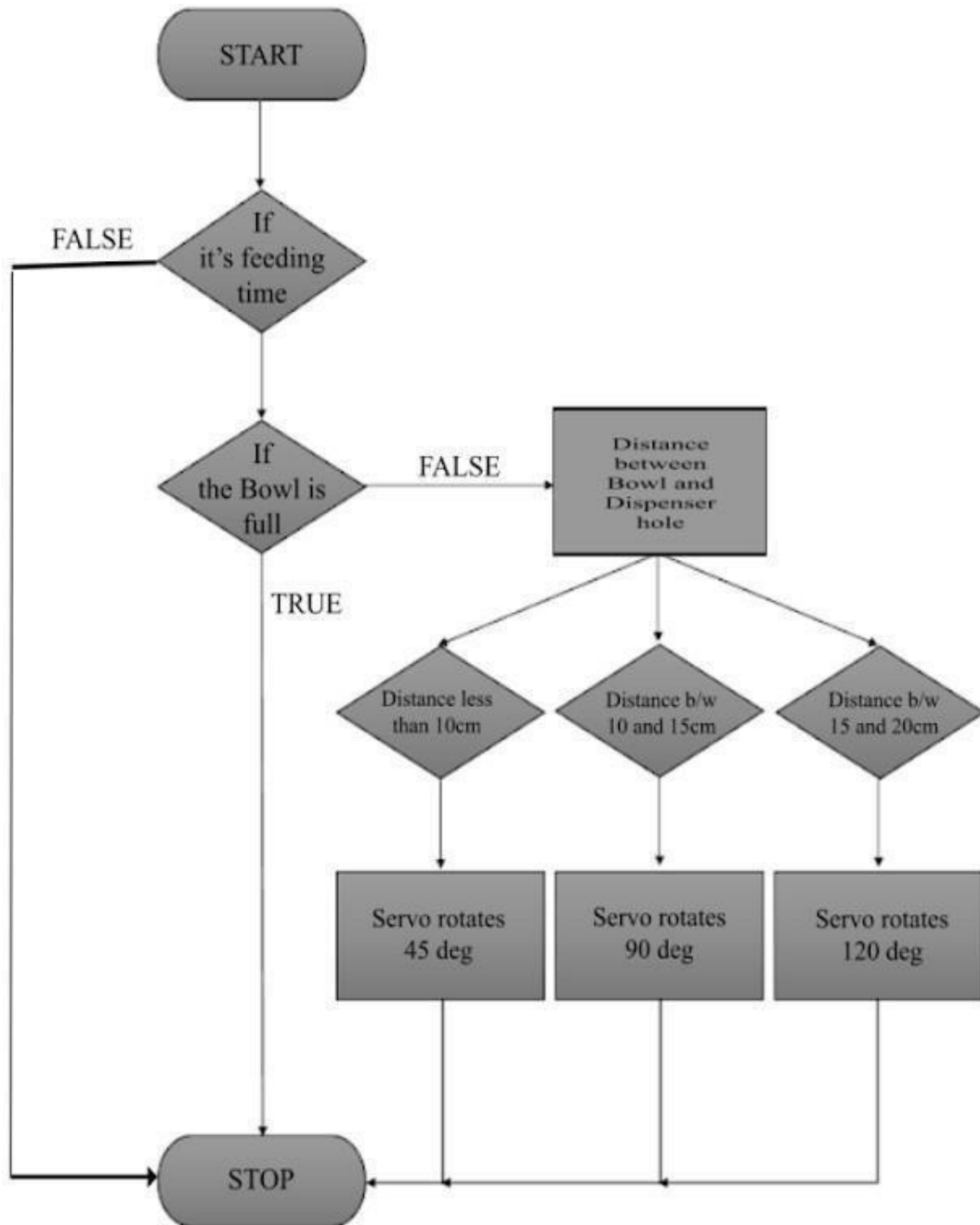


Fig 2. Pet feeder flow chart for simulation

Simple hardware and software are used by the open-source electronics platform Arduino, which can be programmed and interfaced with. An LED can be turned on, a motor can be started, or anything may be published online by using Arduino boards to take inputs like light from a sensor, hitting a button, or a tweet and turn them into output. Code could be used to send commands to the board's microcontroller. This is done using the Arduino Software (IDE), which is based on Processing, and the Wiring-based Arduino programming language. Arduino is able to perceive its surroundings by taking information from add-on gadgets like sensors, and it can control its surroundings by modifying the brightness of lights, the speed of motors, and other actuators. Wokwi Arduino Simulator: The www.wokwi.com website simulates the suggested design. The Wokwi Arduino Simulator, which runs on the AVR8js framework, was created to satisfy many additional unmet needs. A web-based Arduino Simulator is what it is. Web browsers are used by both mobile and desktop computers to operate the Wokwi Arduino Simulator. The user interface is straightforward and displays virtual components and the Arduino sketch side by side. It also supports code formatting and uploading to a real Arduino (in beta). Coding on the fly is feasible because to the website's mobile friendliness.

5. Methodology

There are several uses for pet feeders. In this technique, the bowl will be filled at a certain time and refilled when it is empty. Here, the program is set up so that the buzzer periodically buzzes to indicate how much pet food is still in the feeder. When the buzzer is activated, the food dispenser regulates how much food is dispensed based on how much feed the animal has consumed. The Arduino Uno R3, Ultrasonic distance sensor HC-SR, and Servo motor SG90 are the components used.



Fig : Front view of the smart pet feeding prototype

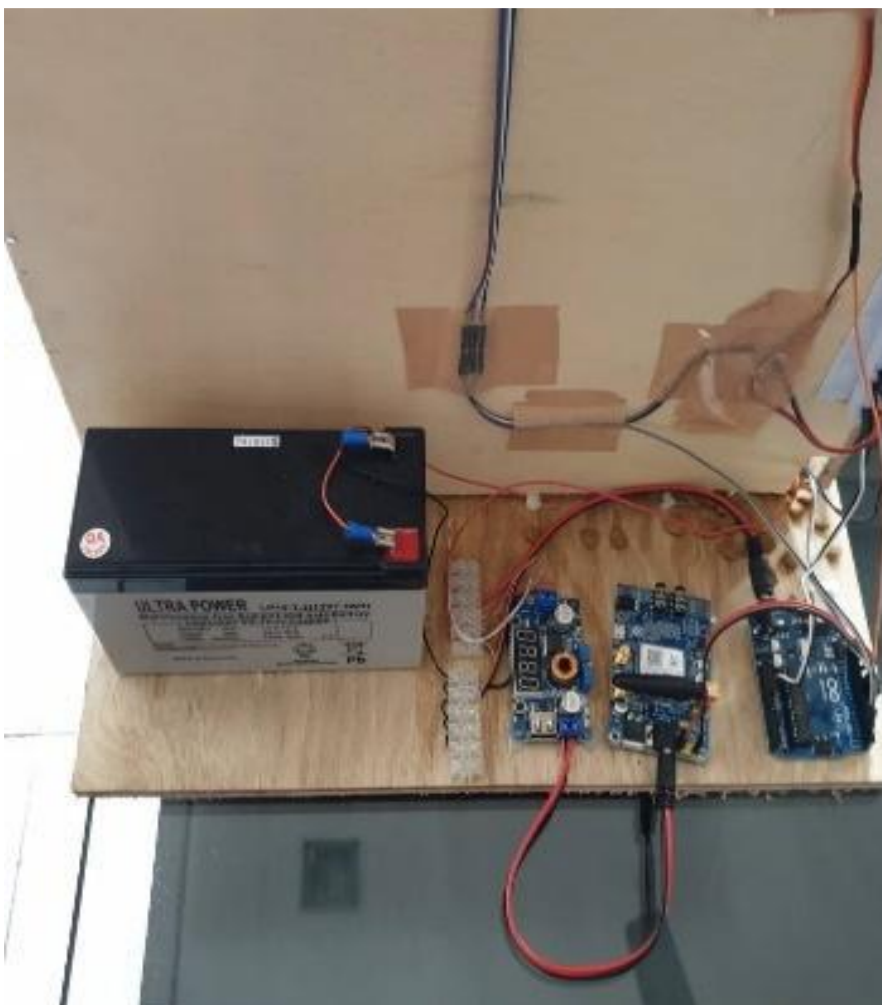


Fig: Back view of the smart pet feeding prototype

Volumetric Flow Rate

In order to find the amount of food being dispensed from the food tank into the feeding area, Volumetric Flow Rate shall be calculated via below formula:

$$Q = A * V$$

The cross sectional area depends on the outlets interfaced with bottom of the hopper. Therefore, the A can be found for small and large outlets as:

$$A_s = \pi * r_s^2 \dots \dots \dots (1)$$

knowing that $r_s = 1\text{cm}$; $A_s = \pi * 1^2 = 3.14 \text{ cm}^2$ and for large outlet; $A_l = \pi * r_l^2$ knowing that

$$r_l = 2.5\text{cm}; A_l = \pi * 2.5^2 = 19.63 \text{ cm}^2$$

The motive behind this flow is the gravity; Gravitational flow rate.

Gravitational flow rate is calculated using Manning's Equation, which applies to the uniform flow rate in an open channel system that is not affected by pressure. The Manning's Equation for flow rate is:

$$Q = A * V = A * (1/n * R^{2/3} * S) \dots \dots \dots (2)$$

Where:

Q = Flow Rate,

v = Velocity,

A = Flow Area,

n = Manning's Roughness Coefficient

R = Hydraulic Radius, and

S = Channel Slope

The surface of the food tank at the outlet is made of steel and the cross-sectional outlets are made of wood. The Manning's Roughness Coefficient for steel and wood is 0.012. The slop channel in the food tank is near closed to 0.012 cm.

The hydraulic radius can be calculated by below formula:

$$R = AP \dots \dots \dots (3)$$

Where P is the wetted perimeter and it is equal to the sides and bottoms of the bottom of hopper. The P is almost equal for both the outlets. Therefore, the P is 19 cm. Therefore, the Hydraulic Radius for small and large outlets are as 0.165 cm and 1.033 cm respectively. Therefore, the flow rate for small and large outlets is 8.62 cm³/s and 183.11 cm³/s respectively.

6. Steps in the algorithm:

Connector Pins:

The pins 7 and 6 for the ultrasonic distance sensor

The Pin 2 for servo

The Pin 3 for the buzzer

The Pin 8 for LED

The `setup()` function performs all component initialization.

Using an ultrasonic distance sensor, the function `loop()` measures distance.

With the help of the function `microseconds to Centimetres ()` and the formula $cm = (\text{duration} * 2) / 29$, the microseconds are converted into centimetres, where `duration` denotes the time it takes for the pulse to change from low to high.

The time and date are displayed on the 16x2 LCD screen in the following way: the first line is the time, in the time format of hh-mm-ss, and the second line is the day, followed by the date, in the format of dd-mm-yy. The servo motor then activates and rotates at predetermined intervals that the user sets under the following circumstances:

- i) The LED and buzzer are simultaneously turned on to draw the attention of the pet for 5 seconds if the distance, measured in cm, is 10. The servo rotates by 45° and returns to 0° after this time.
- ii) The LED and buzzer are turned on simultaneously to grab the pet's attention for 5 seconds if the distance measured is between 10 cm and 15 cm. The servo rotates by 90° and returns to 0° back after 10 seconds. If the distance is between 10 cm and 15 cm, the LED and buzzer both turn on at once to get the animal's attention for 5 seconds. After 10 seconds, the servo rotates by 90° and then reverses direction.
- iii) The servo doesn't rotate at all and nothing happens if none of the conditions are met.
- iv) The real date and time can be set using `SETDATATIME()`
- v) The `Dec To BCD()` function converts decimal to BCD using the following equation: $((\text{value} / 10 * 16) + (\text{value} \% 10))$.
- vi) The function `BCD To Dec()` converts BCD to decimal using the following formula: $((\text{value} / 16 * 10) + (\text{value} \% 16))$.

- vii) The two functions mentioned above are utilized to make the LCD show the date and time.

7. RESULTS & ANALYSIS

There are no complicated steps in the procedure, making it simple to use. As it employs an onboard battery in the RTC, it is light and portable and may be powered by energy. As a result, this model aids in the elimination of the overweight and obesity issues that are prevalent in dogs and cats, which make up over 55% of the population and pose serious health risks like heart and lung issues, kidney illness, and diabetes.

Schematic illustration: (fig.3)

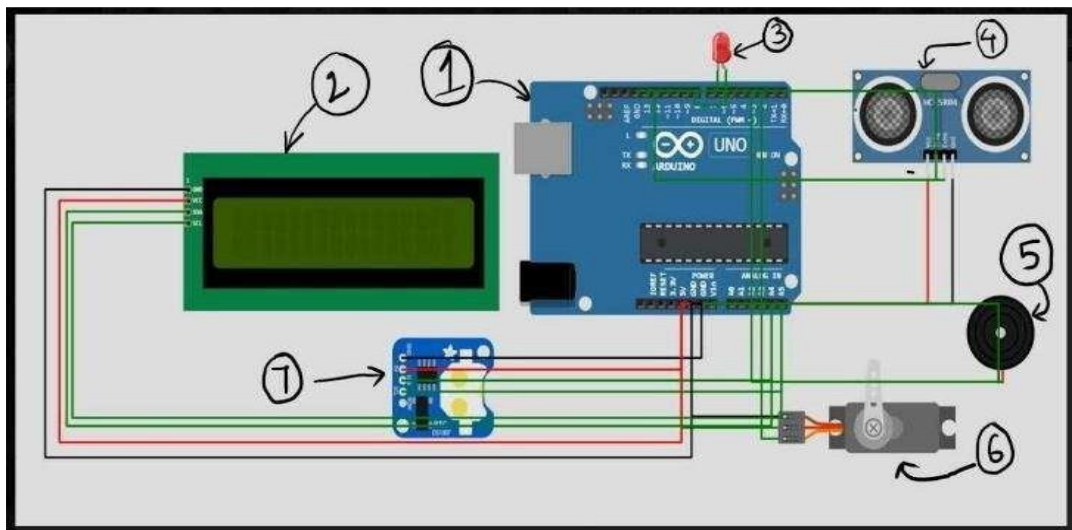


Fig 3: Pet feeders labeled simulated wire diagram

Arduino Uno R3
LCD
LED
Ultrasonic Distance Sensor
Piezo Buzzer
Servo Motor SG90
RTC

Observations

The following observations are based on simulated findings as shown in Table 1 and were made after simulating the hardware parameters using the soft tool and creating all possible scenarios of the feeder fullness.

Distance Measured (cm)	Condition	Servo Rotation (degrees)
Less than 10	Animal has consumed very little	45 degrees
10 to 15	Pet has consumed a modest amount	90 degrees
15 to 20	Pet is almost done with food	120 degrees

Table 1: Different Conditions For Servo Motor Rotations

Distance less than 10 cm: Less than 10 cm: Assume a space of 6 cm between the bowl and the dispenser hole when the distance is less than 10 cm. In order to open the dispenser hole for 10 seconds, the servo arm rotates at a 45° angle. Figure 4 illustrates this by showing the LED and Buzzer ON for 5 seconds.

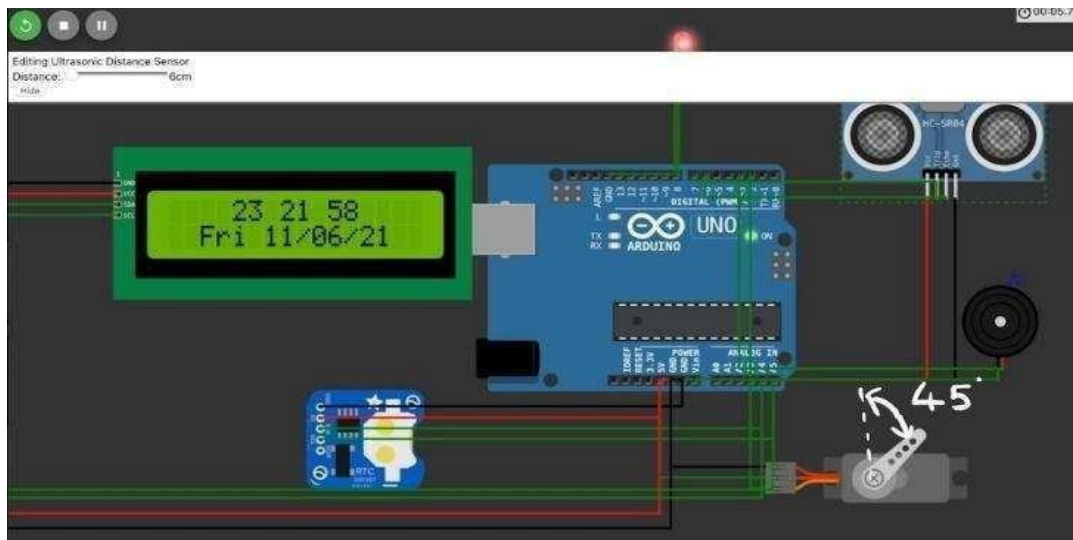


Fig 4. Simulated Output when distance is 6 cm from bottom or top

A distance of 10 to 15 cm: The simulated output at a 13 cm distance is depicted in figure 5. Consider the distance between the bowl and the dispenser hole to be 13 cm for the condition of the distance between 10 and 15 cm. In order to open the dispenser hole for 10 seconds, the servo arm rotates by 90 degrees. Even the LED and Buzzer are activated for 5 seconds during this

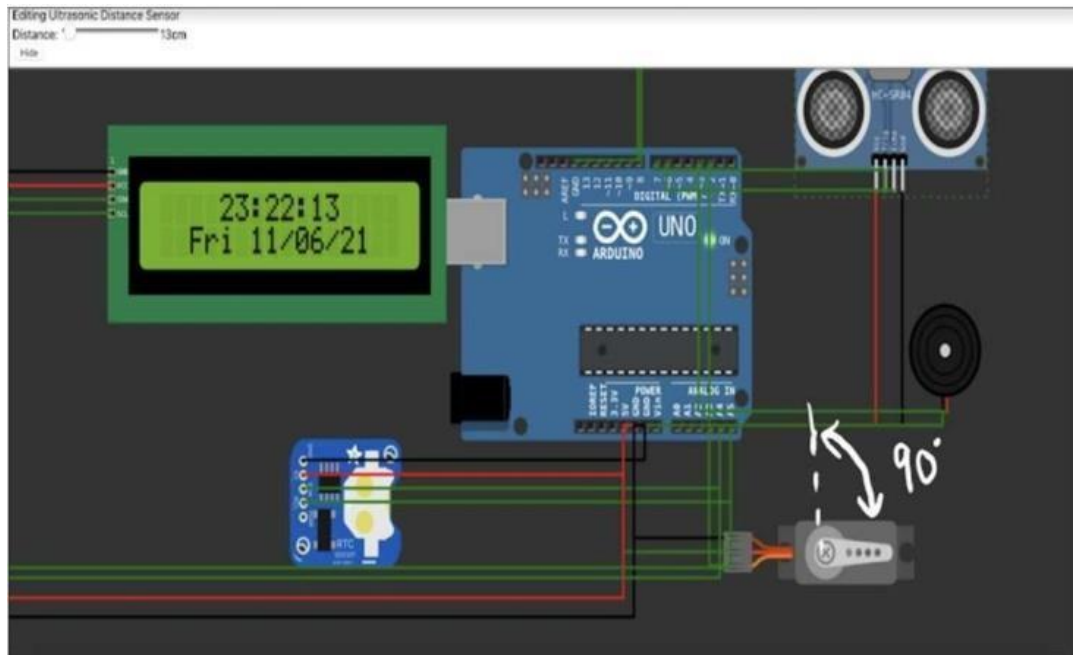


Fig5. Simulated Output when distance is 13 cm from bottom or top

A space of 15 to 20 cm : Consider the distance between the bowl and the dispenser hole to be 17 cm for the case where the gap is between 15 and 20 cm. In order to open the dispenser hole for 10 seconds, the servo's arm rotates by 120 degrees. As depicted in Figure 6, even the LED and Buzzer turn on for 5 seconds during this time.

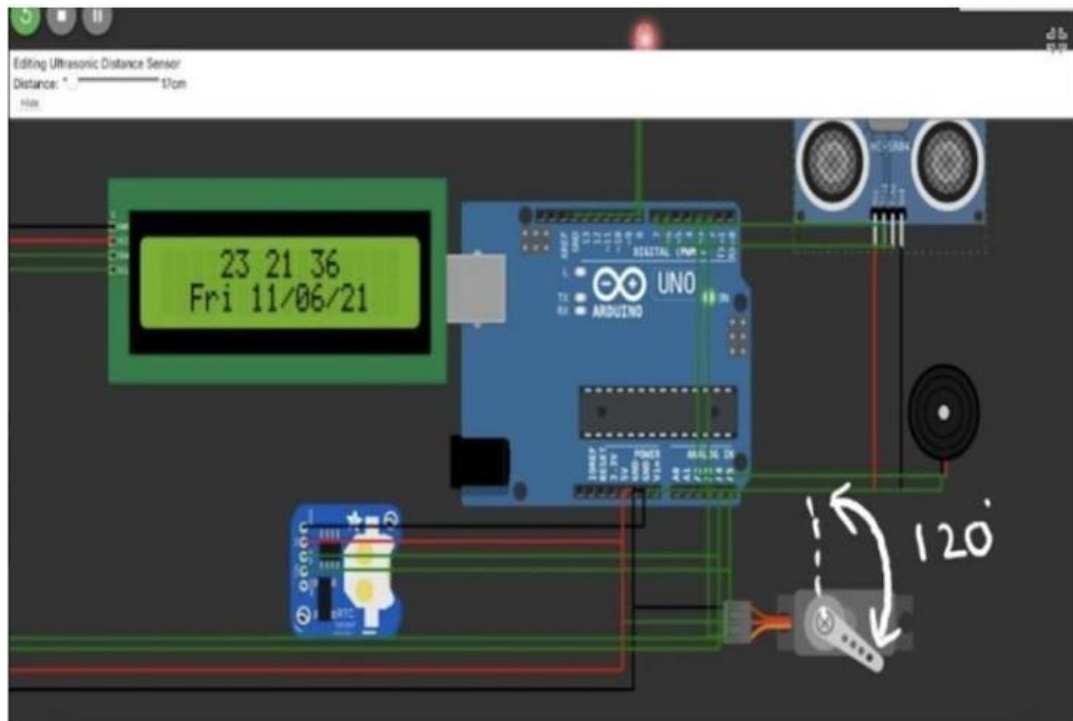


Fig6. Simulated Output when distance is 17 cm

8. CONCLUSION

The features in this prototype design will make it simpler for both the owner and the pet to take care of pets. The required components are the Arduino Uno R3, Ultrasonic distance sensor HC-SR, Servo motor SG90, RTC, Buzzer, and LED, as was previously indicated. The intake of pets can be observed using the simulated data from above. Additionally, different pet food requirements can be changed, including the frequency of feedings, the quantity of food dispersed, and the length of time the dispenser hole is left open. This design offers numerous brand-new features when compared to earlier iterations. In this design, you can change the feed time, the gap between successive feeds, and the amount of feed that is delivered. This design also features a refill reminder and a call that the pet will hear when it's time to feed.

9. FUTURE SCOPE

Future innovations are expected to be exciting thanks to the current trend of fusing IoT technology with pet management. Additional features, such as a second camera that enables the owner to check on whether their pet is eating, can be added to the Automated Pet Feeder in order to conduct more extensive study. Additionally, pet collars with RFID tags can be utilized to identify the animal.

REFERENCES:

- [1] C. Own, H. Shin and C. Teng, "The Study and Application of the IoT in Pet Systems," *Advances in Internet of Things*, Vol. 3 No. 1, 2013, pp. 1-8. doi: 10.4236/ait.2013.31001.
- [2] "Intelligent Food Dispenser (IFD)" Hari N. Khatavkar, Rahul S. Kini, Suyash K. Pandey, Vaibhav V. Gijare, 2019.
- [3] Ma and N. Guo, "Design of Remote Pet Feeding System Based on ARM", 2020 Chinese Automation Congress (CAC), 2020, pp.1702-1704, doi:10.1109/CAC51589.2020.9326679.
- [4] N. Naik, "Choice of effective messaging protocols for IoT systems: MQTT, CoAP, AMQP and HTTP," 2017 IEEE International Systems Engineering Symposium (ISSE), 2017, pp. 1-7, doi:

- [5] "Implementation of an IoT based Pet Care System" ,Yixing Chen, Maher Elshakankiri, Department of Computer Science University of Regina, Canada.
- [6] "Automatic Pet Food Dispenser by using Internet of Things (IoT)", TannopSangvanloy and KingkarnSookhanaphibarn BU Multimedia Intelligent Technology Laboratory,School of Information Technology and Innovation Bangkok University, Thailand.
- [7] "Surveillance Robot using Raspberry Pi and IoT",Harshitha R Assistant Professor, MVJ College of Engineering Bangalore Muhammad Hameem Safwat Hussain Electronics and Communication Engineering MVJ College of Engineering, Bangalore
- [8] "Surveillance Camera using IoT and Raspberry Pi ",Bandi Narasimha Rao Department of Electronics and Communication NIT Warangal,Reddy Sudheer Department of Electronics and Communication RGUKT Nuzvid
- [9] "Smart Pet Feeder ",Soumallya Koley†1, Sneha Srimani, Debanjana Nandy, Pratik Pal, Samriddha Biswas1, Dr. Indranath Sarkar1 Department of Electronics and Communication Engineering, JIS College of Engineering; Kalyani, Nadia, West Bengal
- [10] "Automatic Pet Food Dispenser by using Internet of Things (IoT)",Tannop Sangvanloy and Kingkarn Sookhanaphibarn BU-Multimedia Intelligent Technology Laboratory, School of Information Technology and Innovation Bangkok University, Thailand
- [11] "Video Surveillance Robot Control using Smartphone and Raspberry Pi ",Ashish U. Bokade and V. R. Ratnaparkhe International Conference on Communication and Signal Processing, April 6-8, 2016, India
- [12] "The Study and Application of the IoT in Pet Systems ",Chung-Ming Own, Haw-Yun Shin, Chen-Ya Teng Department of Computer and Communication Engineering, St. John's University, New Taipei City, Chinese Taipei Department of Computer Science and Engineering, National Taiwan Ocean University, Keelung City, Chinese Taipei ,Department of Computer Science and Information Engineering, Tamkang University, New Taipei City, Chinese Taipei
- [13] "A design of high-level water tank monitoring system based on Internet of things" CurungZhiv College of Civil Engineering University of South Chin Hangyang, Hunan Province, China 2020 7th International Forum on Electrical Engineering and Automation (IFEEA)

- [14] "A Prototype of IoT based Remote Controlled Car for Pentesting Wireless Networks", Debajyoti Mukhopadhyay Sushmita Karmakar Department of Computer Engineering NHITM, Mumbai University, India NHITM, Mumbai University, India
- [15] Programmable Pet Feeder (Tessemma Gelila Berhan, Worku Toyiba Ahemed, Tessema Zelalem Birhan; 2014.
- [16] Simulation of Automatic Food Feeding System For Pet Animals (Dharanidharan.J, Puviarasi.R: 2018
- [17] "Pet Feeding Dispenser Using Arduino And Gsm Technology" Smruthi Kumar, 2018
- [18] "Proposed System for Animal Recognition Using Image Processing" Ankur Mahanty,
- [19] Wayne "Intelligent Food Dispenser (Ifd)" Hari N. Khatavkar, Rahul S. Kini, Suyash K. Pandey, Vaibhav V. Gijare, 2019 .
- [20] "Pet Feeding Dispenser Using Arduino And Gsm Technology" Smruthi Kumar, 2018
- [21] "Automatic Pet Feeder" Aasavari Kank, Anjali Jakhariye, 2018
- [22] S.SUBAASHRI, ET AL., "Automatic Pet Monitoring and Feeding System Using IoT,". *International Journal of ChemTech Research*, 10(14), pp. 253-258, 2017.
- [23] JIGARMASEKAR, JASHSOHNI & SHARMA, S., "Review of IOT in Pet Management,". *IOSR Journal of Engineering*, Volume 12, pp. 59-63, 2018.
- [24] SINGH, P., SHARMA, A. K., SOOD, P. & SINGH, P., "REMOTE CONTROLLED AND GSM BASED AUTOMATED PET FEEDER,". *International Journal of Electrical & Electronics Engineering*, 2(2), pp. 14-18, 2015.
- [25] TIWARI, M. S. ET AL., "Automatic Pet Feeder Using Arduino,". *International Journal of Innovative Research in Science, Engineering and Technology*, 7(3), pp. 2891-2897, 2018.
- [26] WANKHEDE, D. K. & PEDNEKAR, S., "Animal Tracking and Caring using RFID and IOT,". *IOSR Journal of Computer Engineering*, pp. 24-27, 2017 .